
The New School of Music

at the USF College of The Arts



Setting a New Standard For Music Education and Performance

We believe that the influence of the arts should extend beyond our campus, and we take pride in the fact that the School of Music in the College of The Arts occupies such an important place in Tampa Bay's cultural landscape. Through more than 200 public concerts and events each year, we provide opportunities for our neighbors across the region to enjoy the talents of our University's musical artists as well as an impressive slate of nationally and internationally-renowned performers.

The students, faculty and visiting musicians at the School of Music enrich our lives with their beautiful sounds every day, and they deserve to learn, rehearse, teach, and perform in surroundings befitting their talent and dedication. And we know that a new, state-of-the-art teaching and performance facility will enhance our reputation, not only as a leader in music education and performance, but as a vibrant presence in the Tampa Bay arts scene.

This new 113,535 square foot teaching facility combines stunning performance spaces and up-to-date teaching and rehearsal spaces that meet superb acoustical standards.

A magnificent 1,200-seat, European-style concert hall — planned as Phase 2, pending private donations — will allow for large choral and orchestral collaborations. A 485-seat concert hall and 116-seat recital hall will serve as more intimate venues for concert experiences, and the acoustics will make them sought-after recording halls for our own ensembles, the Florida Orchestra, Master Chorale of Tampa Bay, and others in the area.

The new music building will not only attract top students and faculty, but will also enable the School of Music to host gatherings of highly regarded groups, including the College Music Society, the International Trombone Association, and the Suncoast Music Education Research Symposium. We will also be able to increase our outreach to the young, aspiring musicians in our community through band camps, music symposia, and other innovative education programs, adding another facet to a rich and diverse artistic environment.

We hope you will join us in the exciting effort to create an environment that is essential to the artistic process of music education and performance, and worthy of the gifted musicians who come to the School of Music to study, teach, perform, and inspire.

Designated an All-Steinway School
April 2011

Perspectives: Past, Present, and Future

Past

No other institution within the Tampa Bay region has had more impact on the community than the University of South Florida. The same can be said for the arts at USF. Over the past 50 years, the College of The Arts has been partners with the Tampa Bay Community in establishing and growing the role and value of the arts within the region.

Present

The School of Music in the College of The Arts provides opportunities for advanced study in music in a variety of undergraduate and graduate programs. It offers 200 or more public performances and events each year, many of which include nationally and internationally distinguished artists. And the USF Herd of Thunder Marching Band is one of the most visible musical entities in the entire region, with their seasonal performances at Tampa Bay Buccaneers home games and Yankees spring training.

Future

Our new Music Building is the first step in a long-range goal to become one of the Tampa Bay Area's major cultural resources. This new building will allow top-tier educational and performance opportunities. It will give us room to grow and to accommodate hundreds of music majors — many of whom will become music teachers, serving the instructional needs of the State of Florida. It will give us the space to expand our outreach to public schools in such activities as the Festival of Winds, Festival of Voices, summer band camps, summer string camps, and in-service opportunities for teachers. It will give us opportunities to present new technologies and new degree programs in a high quality and professional manner. And it will help us extend our regional and statewide services to music educators, arts organizations, student music conferences, and competitions.

The Second Phase of our vision is a 1,200-seat Grand Concert Hall — a magnificent public space designed exclusively for music performances that will be one of only a few venues of its kind in the nation, and in the world.

Site Plan



Perspectives from Our Students

Brett Karlin

Graduate Student: Choral Performance

This new building – and the extraordinary music faculty – are the reasons why I’m here. I completed my undergraduate degree at FSU, and had already been accepted into the Master’s programs at Yale, Boston University and University of North Texas – all extraordinary music schools – when I heard about USF’s new music building. I came down and took a tour and was so excited about its potential that I immediately wanted to come to USF. This new Music Building will give students the most refined musical education experience possible. It will be at a level of professional and technical excellence that we rarely get to experience.

This new building is built for the 21st century music student. It’s a completely different world in music now. New technologies are required to learn, to record, to perform, and to publish. This new building will not only meet those needs, but has been designed to also anticipate future advances in the field. And as an education center, this building will attract new students, enable collaborations with high schools, engage the community in dialogues, and prepare tomorrow’s music teachers and performers, with real, practical, authentic, and live experience.

Anthony Collins

Sophomore: Music Education & Music Performance

“The talent here, the faculty, the students coming in, have been improving, and the new facility will keep that quality growing.”

Megan Woods

Sophomore: Music Education & Music Performance

“Ever since they broke ground last year, it’s given me hope for well the School of Music will do in the future, and what it can become.”



A view of the side entrance to the teaching wing of the new building.

Tom Frauenshuh

Junior: Music Performance

“With the new building, the School of Music will get exponentially better. There’s a raw foundation of talent here, in the faculty and the students. With the addition of state-of-the-art facilities and acoustics, there’s no limit to how far and how fast the School will grow. The new building will be the turning point.”

Staisy Kibart

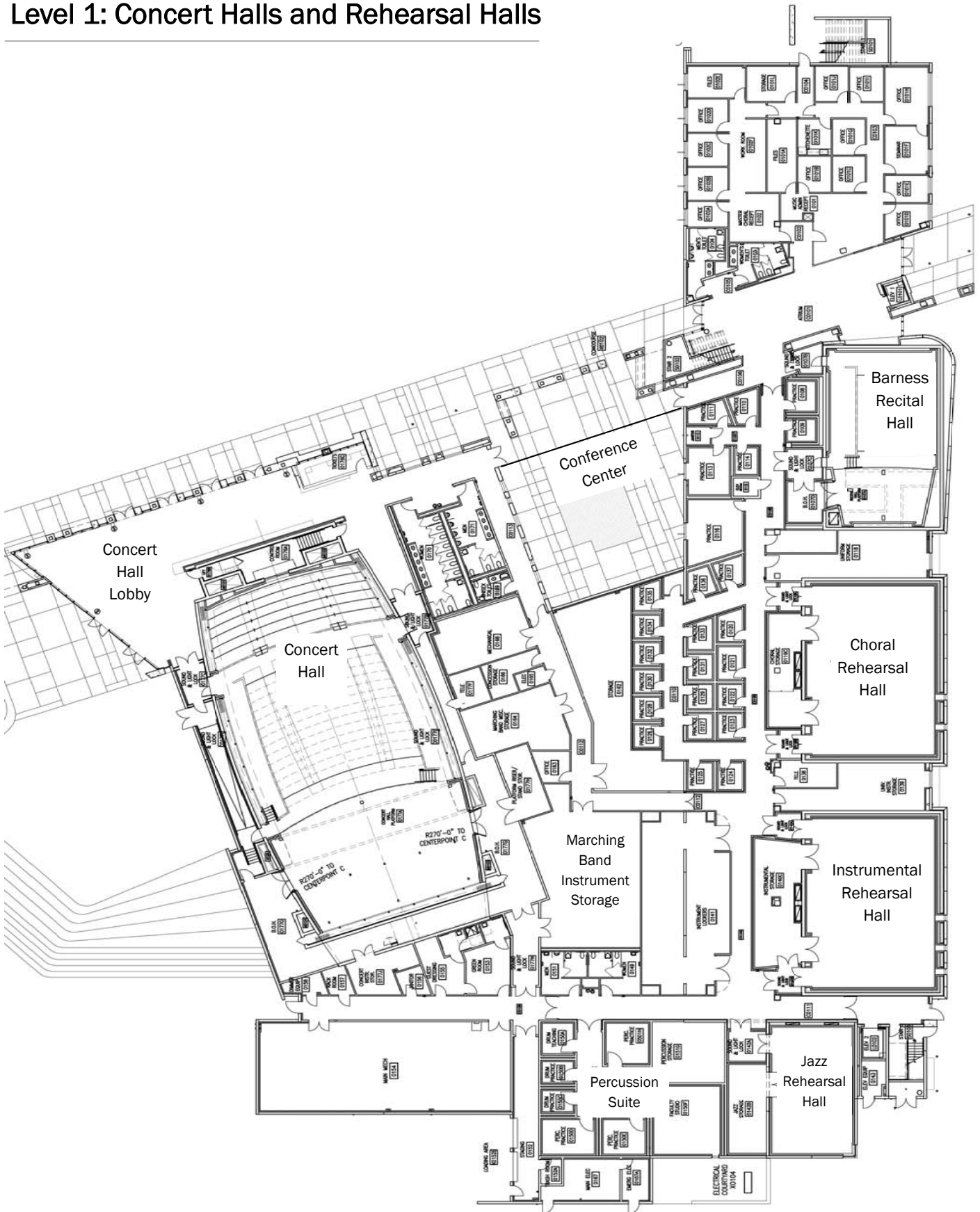
Graduate Student: Instrumental Conducting

“It will also let students have more opportunities to perform on campus, and bring more awareness of the School and its ensembles to the University and the Tampa Bay community.”

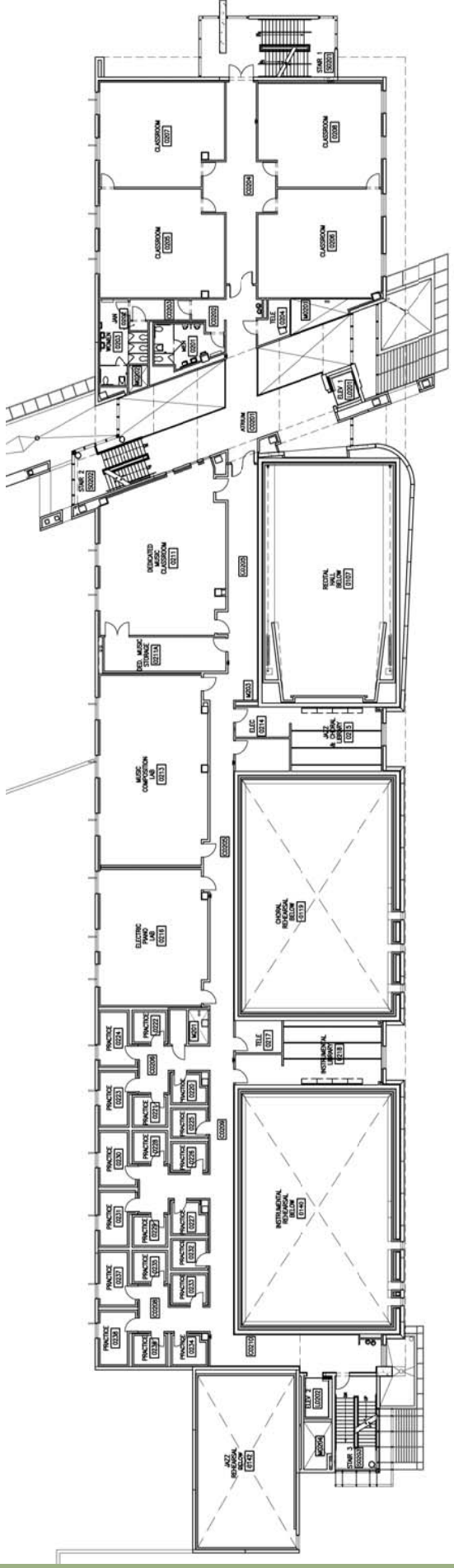


Architectural Renderings

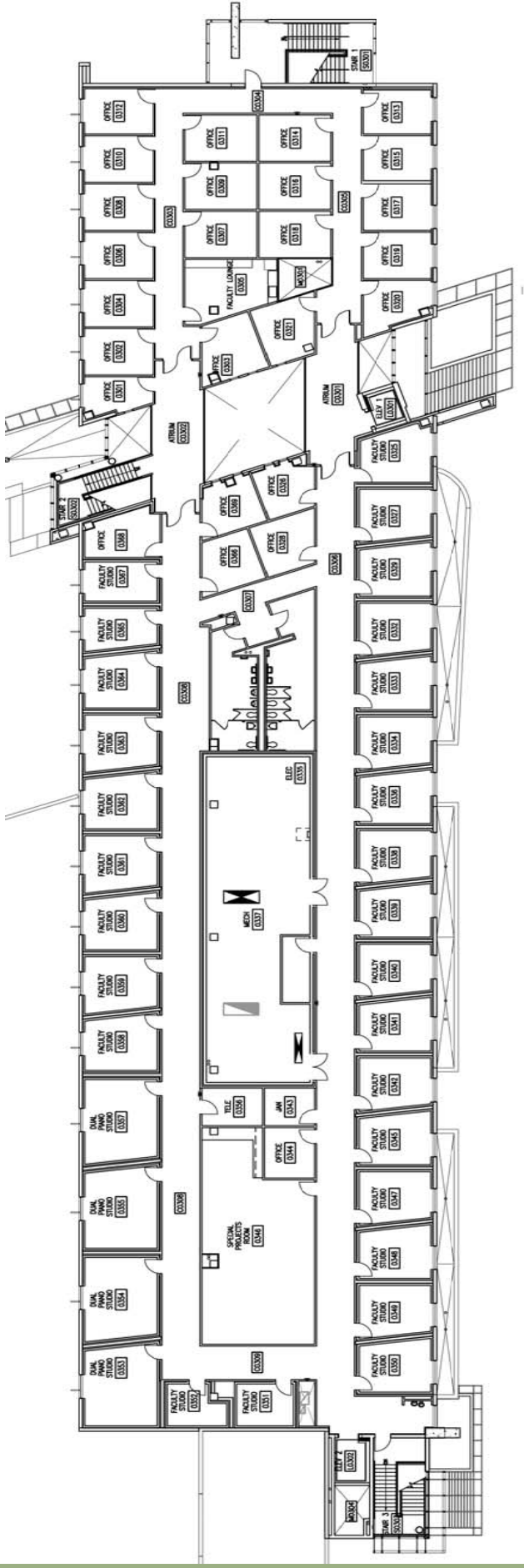
Level 1: Concert Halls and Rehearsal Halls



Level 2: Dedicated Classrooms and Labs



Level 3: Studios and Faculty Offices



Naming Opportunities & Room Descriptions

Concert Hall (485-seats)

\$1.5 Million

Designed as the jewel box of the School of Music teaching facility, this elegant European-style concert hall features unparalleled acoustical design that... A 32-ton acoustic “cloud” above the stage, uniquely angled walls, motorized curtains, sound-lock doors, and bamboo flooring and walls help distribute and customize the sound for each performance, whether it’s a soloist or full orchestra plus chorus. The concert hall and its grand lobby are visible from Holly Drive, near plenty of new parking areas, and easily accessible by guests via a circular entry drive. Two state-of-the-art sound booths provide professional music recording capabilities.

Lobby & Atrium

\$400,000

A magnificent, 3-story glass-enclosed lobby welcomes guests to the new building. This elegant space features a floor-to-ceiling hand-painted fresco, and can accommodate intimate receptions and special events before and after concerts. There is a donor recognition area for our distinguished supporters, and a permanent art exhibition space for revolving collections. The new Box Office is also located here for maximum convenience by our guests.

Green Rooms

\$60,000 / each

Two luxurious Green Rooms with connecting doors serve in a traditional capacity as a place for performers to prepare before going on stage, and also as an intimate gathering space for private receptions where patrons and audience members can greet the performers after concerts. One has its own Steinway piano, while the other has a wardrobe/dressing area, and both have en suite bathrooms, including one with a full shower.

Lewis & Enid Barness Recital Hall (116-seats)

RESERVED

Planned as the centerpiece for student recitals, this concert hall is a smaller-scale version of the grand Concert Hall, with the addition of a full electronic teacher station with digital audio capabilities that will enable students and professors to instantly record and critique performances and rehearsals.

Choral Rehearsal Hall

\$625,000

From select student chamber singers to the professional Master Chorale of Tampa Bay, this space is tailor-made to accommodate all choral and opera activities. Diagonal walls, sound-and light-lock doorways, and specially-designed acoustical ceiling panels provide near-perfect sound quality, while a full teacher technology station allows electronic interaction, digital video and audio capabilities and more. Even the windows have been set deeply into the exterior walls to provide the correct acoustics. Portable risers are deep enough to allow singers to sit in a chair when not performing during a long concert — a rare feature.

Instrumental Rehearsal Hall

\$625,000

Specifically designed to physically and acoustically provide large and small instrumental groups with an exceptional rehearsal experience, this hall accommodates all orchestra and band curricular activity in the School of Music as well as providing the necessary storage for these ensembles. It also features all the special acoustics and technology as the Choral Rehearsal Hall.

Jazz Rehearsal Hall

\$500,000

This space is acoustically designed especially for jazz, from big bands to small group set-ups. It also serves as a performance lab for jazz improvisation and composition classes. The permanent sound system allows students to gain experience in performing with sound reinforcement on a regular basis. It also features all the special acoustics and technology as the Choral Rehearsal Hall, and additionally has its own large storage room.

Percussion Suite

\$175,000

This is a dedicated suite of unique practice rooms, storage areas, and offices for student percussionists. There are five adjoining practice rooms, specially designed for instruments that are large and loud. Each room “floats” on its own, with air separation between the walls, double floors, 250-lb. heavily insulated doors, and even dedicated A/C vents to prevent sound from “leaking” into adjoining spaces. Floor-to-ceiling mirrors allow student musicians to watch and critique their own performance skills.

Marching Band Uniform & Instrument Suite

\$250,000

For the first time in HOT Band history, the Marching Band has two spacious indoor areas to store and maintain their uniforms and instruments, along with a dedicated office.

The Conference Center	\$750,000
<p>The Conference Center is a large professional-level conference space available for use by the School, the University, and the community for workshops, training, arts special programs, educational presentations, and more. It has the capability of being divided into two separate rooms, and features movable tables, stackable chairs, and state-of-the-art technology for presentations. Its location between the concert halls and the classroom spaces makes it an ideal environment for presentations, training/workshops, and special events. It is available for event rentals, and has a prominent exterior naming opportunity.</p>	
General Music Classrooms (4)	\$175,000 / each
<p>There are four general music classrooms on the second floor, each with a capacity of 30 students. They are equipped with student desk/tables on wheels and stackable chairs that can be arranged to accommodate any teaching style, as well as a full teacher technology station, for the study of subjects ranging from music theory to jazz history. Each room includes a state-of-the-art teacher technology station for presentations and audio playback capabilities.</p>	
Music Education Dedicated Classroom	\$250,000
<p>Flexibility and adaptability are the key themes of this classroom, which provides the music education faculty the ability to teach the wide variety of courses found in their curriculum. Movable desk/chair systems allow for a variety of room setups, and the expanded technology package for this room will support the production of online courses and be the home for all video-conferencing needs for the School of Music. Additionally this room has its own mini-computer lab and storage area.</p>	
Music Composition Lab	\$250,000
<p>A state-of-the-art, technological <i>tour de force</i>, the music composition lab houses approximately 20 MIDI computer stations with keyboard controller, sequencer, listening capabilities, and software packages for notation, audio production and creation. The teacher technology station includes the control center linking the computer stations as well as record/playback and projection systems. Students can print to a shared, high-end laser printer.</p>	
Electronic Piano Lab	\$250,000
<p>An exciting teaching/learning classroom, the Electronic Piano Lab (EPL) gives music students the opportunity to explore the fundamentals of keyboard performance and theory/harmony on a scale never before possible. The EPL provides 16 modular piano workstations linked to a master controller/teacher station.</p>	
Special Projects Room	\$250,000
<p>This multipurpose, multifunctional space will accommodate educational activities that fall outside the traditional classroom and enhance the mission of centers of excellence in the School of Music, including the Center for Jazz Composition and Center for Music Education Research. Included in this space will be room for storage, study carrels, and administrative offices.</p>	
Opera Director Faculty Studio, in Memory of Peter D. Way	RESERVED
<p>This combination studio/office provides customized, state-of-the-art studio space with traditional office needs, for the Director of USF's Opera program, and includes a Steinway Grand Piano.</p>	
Dual Piano Studios (4)	\$40,000 / each*
<p>This is learning on a grand scale that can accommodate two grand pianos and a small seated "audience" of fellow students and faculty. (*Piano naming not included.)</p>	
Student Practice Rooms (44)	\$10,000 — \$25,000 / each*
<p>These acoustically designed rooms provide the backbone of the music student's learning experience. Every music student will spend hours developing their performance skills in a practice room during their academic career. All rooms are equipped with music stands, performance chairs, mirrors, and most will have an upright piano. A suite of 5 practice rooms on the first floor were created especially for easy access by students with disabilities. (*Piano naming not included.)</p>	
Carla Clemans Baylor Ensemble Practice Room	RESERVED
<p>The largest student practice room, the Ensemble Practice Room is located on the first floor and will have its own grand piano. It is designed for student performance/recital groups and music ensembles to have a chance to perform together in a professional space with concert-level acoustics.</p>	
Faculty Studios (23)	\$25,000 / each*
<p>These combination studios/offices allow faculty to conduct their teaching and administrative tasks in one location. (*Piano naming not included.)</p>	
Director's Suite and Conference Room	\$1 Million
<p>This spacious suite is the central point of the teaching wing. It provides an elegant reception area, a multimedia conference room, Director's office with its own conference room, staff kitchen/break room, and staff offices.</p>	



Please Contact:

Development Office
USF College of The Arts
4202 E. Fowler Avenue
FAH 110
Tampa, FL 33620
813-974-2301
www.arts.usf.edu

